

MBC MS - Rudder module

HOME > KATEGORIE > CONTROL CONSOLES > MBC-MS - RUDDER MODULE

MBC-MS - Stand-alone rudder module designed for free-standing or terraced placement. The leading colour is RAL7015.

Type	Corrosivity class	Material	Coating
MBC-MS	C2	sheet steel	RAL7015
MBC-MS-OH	C4	stainless steel 1.4301 (AISI 304)	RAL7015
MBC-MS-KO	C5	stainless steel 1.4404 (AISI 316L)	RAL7015

GENERAL INFORMATION:

- Tightness according to IP code: 20
- Impact resistance according to IK code: 10
- Operating temperature range: -20 to +80 °C

TYPES OF SETTING TYPES:

- MBC-MS-Z - Free-standing rudder module, closed sides
- MBC-MS-W - Built-in rudder module, open sides

BASIC DATA:

- Construction: welded
- Closure: front cover with two fasteners
- Internal equipment: two shelves made of galvanized sheet metal, adjustable height
- Cable entry: open space at the bottom
- Grounding: There are threaded grounding studs in the cover and base body

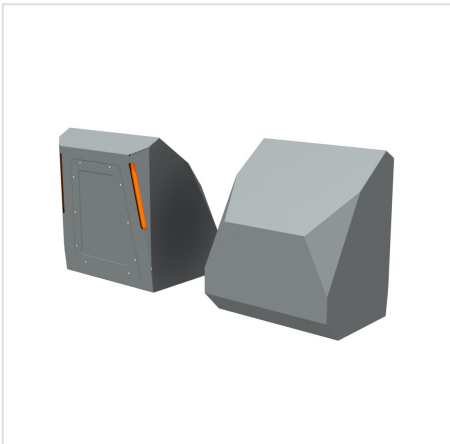
ADDITIONAL OPTIONS:

- Various color options for highlights
- Installation on vibration isolators
- **EMC**

version

- Increased tightness to **IP 66**
- Increase in operating temperature in the range from **-50** to **+120 °C**
- Atypical dimensions
- Opening in the cover, body
- Painting in any color according to the RAL palette

GALERIA PRODUKTU WRAZ Z PRZYKŁADOWYMI REALIZACJAMI



MBC-MS-Z - Free-standing rudder module, closed sides

Lp.	Dimensions (W × H × D, mm)	Catalogue number MBC-MS-Z	Catalogue number MBC-MS-Z-OH	Catalogue number MBC-MS-Z-KO
1	600 × 697 × 518	706-001	706-101	706-201

MBC-MS-W - Recessed rudder module, open sides

Lp.	Dimensions (W × H × D, mm)	Catalogue number MBC-MS-W	Catalogue number MBC-MS-W-OH	Catalogue number MBC-MS-W-KO
1	600 × 697 × 518	706-002	706-102	706-202