

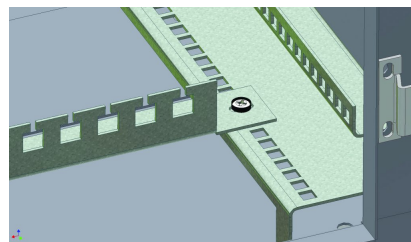
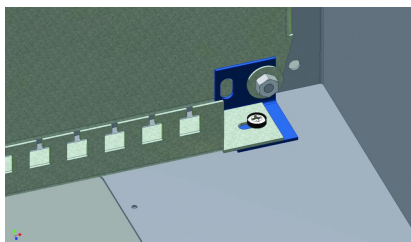
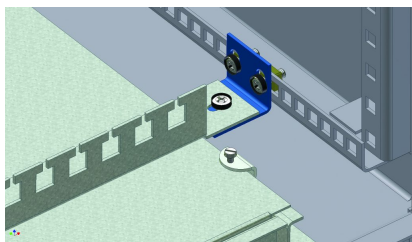
## TKR - Cable holder for RSA, SZA, RSB, SZB, RR

HOME > KATEGORIE > EXTERNAL BUILDING SYSTEMS > TKR - CABLE HOLDER FOR RSA, SZA, RSB, SZB, RR

Is used to reduce the possibility of pulling out the cable from the enclosure by tightening the plastic ties on the cable holders. In RSA and SZA enclosures the cable holder is mounted to the mounting plate with mounting angle bars. In the RSB and SZB it is attached directly to the bottom brackets. In RR it is mounted to the perforated brackets by using mounting angle bars. There is an option of mounting the cable holder in plinth of 200 mm height. For this purpose, select the appropriate WTKRB bracket (check the table below).

Made of 2 mm thick galvanized steel sheet.

### GALERIA PRODUKTU WRAZ Z PRZYKŁADOWYMI REALIZACJAMI



**Lp.   Description - enclosure dimension (W mm)   Catalogue No.**

1	TKR - 300	178-101
2	TKR - 400	178-102
3	TKR - 500	178-103
4	TKR - 600	178-104
5	TKR - 800	178-105
6	TKR - 1000	178-106
7	TKR - 1200	178-107
8	TKR - 1600	178-108

