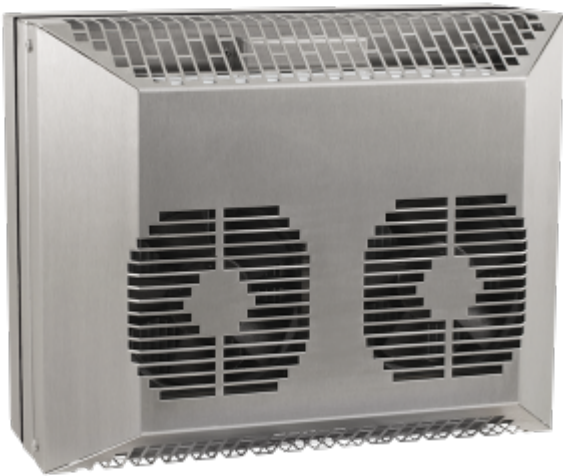


Thermoelectric cooling unit TG 6105305



Product Features

Brand Name:	SoliTherm Peltier
Order Number:	6105305
Housing Material:	Stainless steel AISI 304 (V2A)
IP class EN 60529:	IP 66 NEMA 4X
Note:	Wth frame
Optional:	Stainless Steel 316 with Chromated Heatsinks, P/N: 61053054
Approvals:	CE, RoHS
Accessories:	Peltier Condensate Kit
Taric Code:	84158300

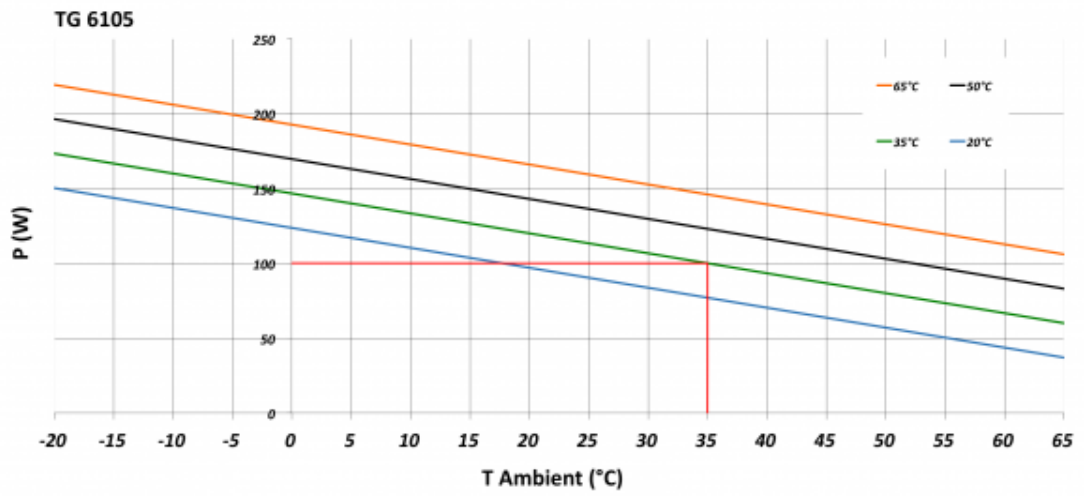
Technical data TG 6105305

Cooling capacity L35L35:	100 W
Temperature range:	-20°C - +65°C
Setting range:	Yes
Air volume flow:	Ambient air circuit: 128 m ³ /h Cabinet air circuit: 46 m ³ /h
Mounting:	External (with frame)
Dimension HxWxD:	280 x 356 x 166 mm
Weight:	11 kg
Cut out dimensions:	322 x 252 mm
Voltage / Frequency:	120 - 230 V ~ 50/60 Hz
Current L35L35:	1.0 A @ 120 V 0.5 A @ 230 V
Starting current:	2 A @ 120 V 1 A @ 230 V
Nominal power L35L35:	125 W
Max. power:	240 W
Fuse:	4 A (T) @ 120 V 2 A (T) @ 230 V
Connection:	8-Pole Connector

Please click on the graphics to download.
More CAD drawings can be found under [Product Download](#).
> [Overview product group Cabinet cooling units - Peltier](#)

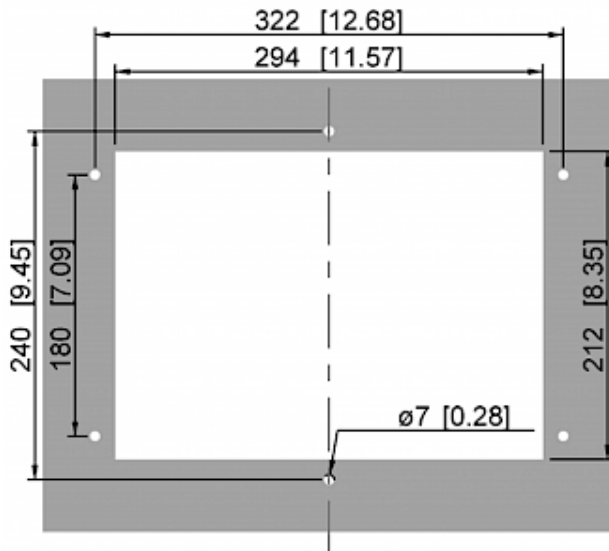
Performance Graph:

T = Ambient temperature
P = Cooling capacity



[click image to enlarge](#)

Cut out dimensions:



[click image to enlarge](#)