



Signal lamp

Technical data

Signal lamp Type 418 8170

	Complete certificate <sup>1)</sup>	Component certificate	
Marking accd. to 2014/34/EU	Ⓢ II 2 G Ex de IIC T6 Ⓢ II 2G Ex d ia IIC/IIB Gb	Ⓢ II 2 G Ex de IIC/IIB Gb Ⓢ I M2 Ex d e IIC/IIB Gb	
EC-Type Examination Certificate	PTB 99 ATEX 1034	IBExU 12 ATEX 1047 U	
IECEX Certificate of Conformity	IECEX IBE 14.0005 U		
Marking accd. to IECEx	Ex de IIC/IIB Gb Ex de I Mb		
Operating temperature range		-45 °C up to +68 °C (IIC) -60 °C up to +68 °C (IIB)	
Permissible ambient temperature	-55 °C up to +50 °C		
Application temperature <sup>2)</sup>	-45 °C up to +60 °C (IIC)	-60 °C up to +60 °C (IIB)	
Rated voltage	Ex ed IIC) (LED) (Ex d ia IIC) (Ex ed IIC)	20 V up to 254 V AC/DC 10 V up to 30 V DC 12 V up to 24 V AC/DC	20 V up to 254 V AC/DC 10 V up to 30 V DC 12 V up to 24 V AC/DC
Rated current	(20 V up to 250 V) (LED) (10 V up to 30 V Ex d ia IIC) (12 V up to 24 V) DC	approx. 4 - 15 mA max. 25 mA max. 24 mA	max. 25 mA max. 24 mA
max. value for Ex ia	U <sub>i</sub> = 30 V DC, I <sub>i</sub> = 100 mA, P <sub>i</sub> = 750 mW	U <sub>i</sub> = 30 V DC, I <sub>i</sub> = 100 mA, P <sub>i</sub> = 750 mW	
Connecting terminals	2 x 2.5 mm <sup>2</sup>	2 x 2.5 mm <sup>2</sup>	
Degree of protection accd. to EN 60529	IP66 <sup>1)</sup>	IP00	
Dimensions (L x W x H)	147 x 38 x 67 mm	99 x 38 x 57 mm	
Weight	0.20 kg	0.15 kg	
Type of mounting	Ø 30.3 mm fixing hole	Ø 30.3 mm fixing hole	
Enclosure colour	grey	grey	
Angle of rotation	270°	270°	
Scale	0 - 100 %	0 - 100 %	

<sup>1)</sup> with protective cover IP66

<sup>2)</sup> The limits of the operating temperature range and the max. permissible temperature rise of the components have to be taken into account. See also pages 2.4.34/35.

## Ex-signal lamp for panel mounting



Signal lamp

### 4 Ordering code for component (Code 2) - code A - B

Code            A                            B  
 Order No.     GHG 481 81710 R00    —

### Ordering code for component (Code 2) - code A - B

Code	Component	Code
A	Signal lamp	GHG 418 8170 R00
Code	Voltage	Code
B	20 V - 254 V AC/DC	51
	10 V - 30 V DC (Ex-i <sup>1)</sup> )	52
	12 V - 24 V AC/DC	53

### Example for ordering code (Code 2)

Content	Order No.	
	A	B
<b>Version without protective cover with lens cover yellow, red, green and white</b>		
Universal voltage 20 V - 254 V AC/DC	<b>GHG 418 81 70 R00</b>	<b>51</b>
For intrinsically safe circuits (10 V up to 30 V DC)1)	<b>GHG 418 81 70 R00</b>	<b>52</b>
Low voltage 12 V up to 24 V AC/DC	<b>GHG 418 81 70 R00</b>	<b>53</b>

<sup>1)</sup> Supply by valve-driver components, e.g., with data

$U_o = 20 \text{ V} - 28 \text{ V DC}$  with  $R_i = 200 \Omega - 500 \Omega$  or  $U_o = 10 \text{ V} - 18 \text{ V DC}$  with  $R_i = 100 \Omega - 200 \Omega$

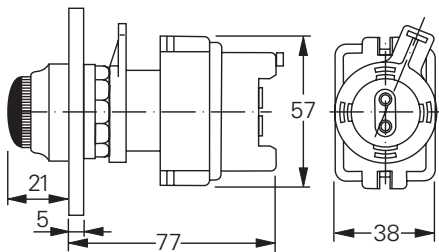
No effective Ci and Li values.

### Accessories

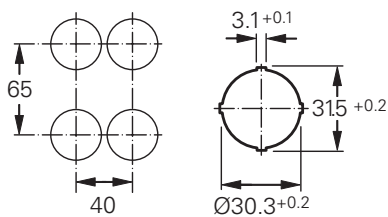
Type	OU	Order No.
Protective cover to meet IP66	5	<b>GHG 410 1939 R0002</b>

Please pay attention that only order units (OU) according to the ordering details can be delivered.

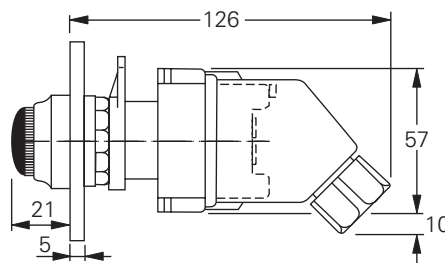
### Dimension drawing



Signal lamp without protective cover



Minimum distances



Signal lamp with protective cover

Dimensions in mm